

£3,000 PCM
Mardley Hill
Welwyn, AL6 0TT

PROPERTY SUMMARY

This striking and unique architect-designed detached family residence offers inspiring, split-level contemporary accommodation with a wealth of design features. Highlights include vaulted ceilings, open-plan living, a galleried landing, and deep double-glazed windows that provide a lovely view of the landscaped garden. The property spans approximately 2,450 sq ft and comprises: a deep central hall with a staircase, a living room with a log burner, an impressive kitchen/dining area, a utility room, a study, a cloakroom, four double bedrooms, two en-suite shower rooms, a dressing room, and a family bathroom.

The professionally landscaped rear garden is approximately 90 feet deep and features a recently re-laid decked seating area, raised planters, and established side borders. The house is approached from the front via a private pillared driveway, which leads to a double integral garage and parking for several cars. Additional features include gas-fired underfloor heating, double-glazed windows, solid American Oak doors throughout, and a security alarm.

Energy Rating: C

The delightful Oaklands area is located just northeast of Welwyn village and enjoys beautiful borders alongside woodland, offering some fine country walks. The area boasts a junior/mixed

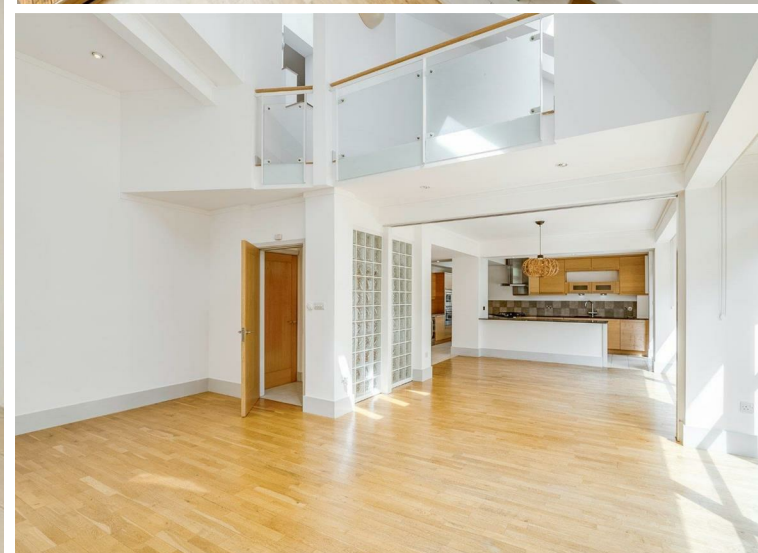
4



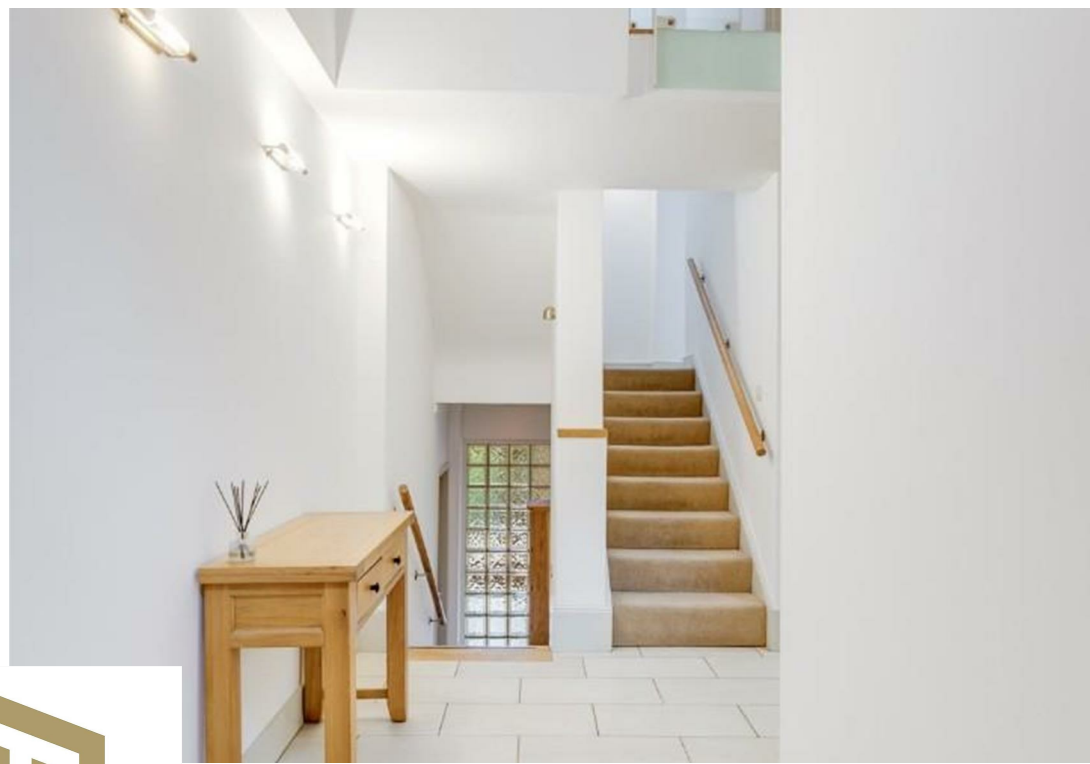
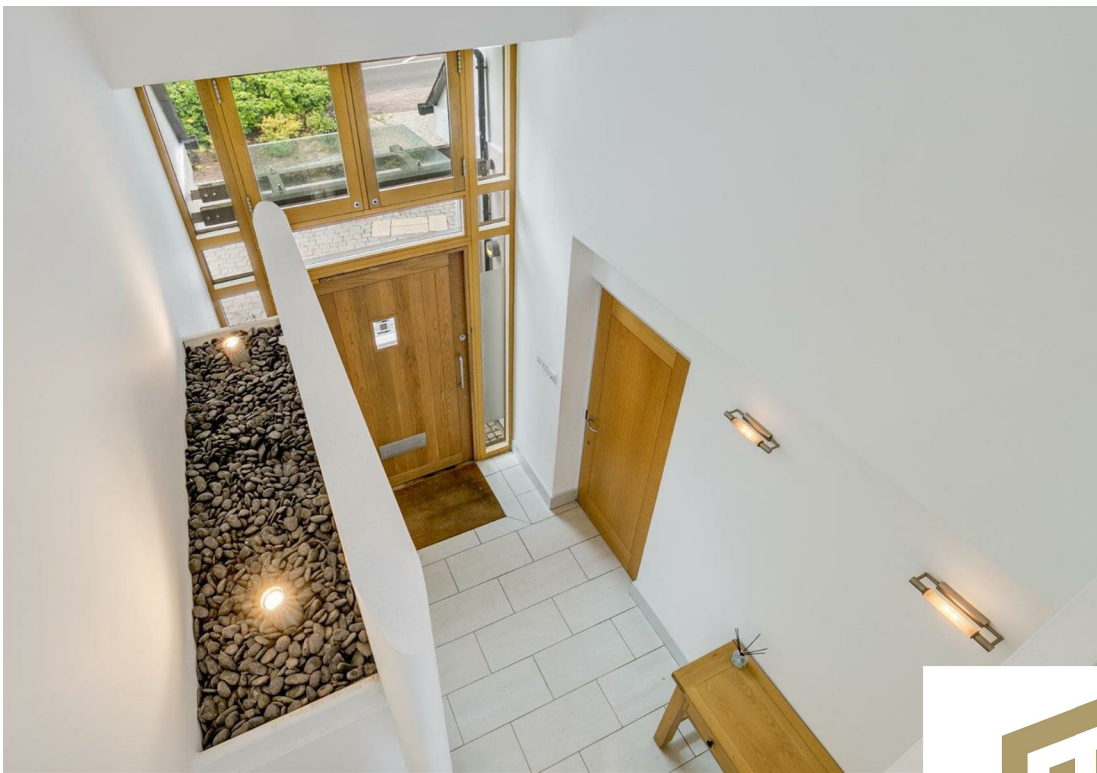
3



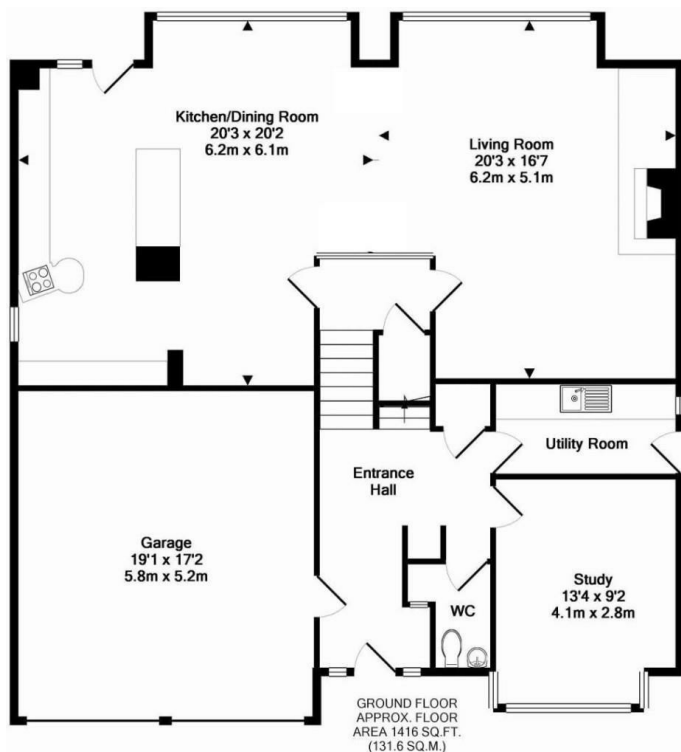
2









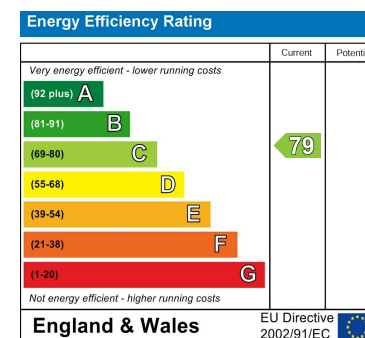


LOCAL AUTHORITY
Welwyn & Hatfield DC

TENURE

COUNCIL TAX BAND
G

VIEWINGS
By prior appointment only



Agents Note: Whilst every care has been taken to prepare these particulars, they are for guidance purposes only. All measurements are approximate and are for general guidance purposes only and whilst every care has been taken to ensure their accuracy, they should not be relied upon and potential buyers/tenants are advised to recheck the measurements



OFFICE ADDRESS

Putterills Lettings
123 London Road
Knebworth
SG3 6EX

OFFICE DETAILS

01462 419333
lettings@putterills.co.uk
www.putterills.co.uk